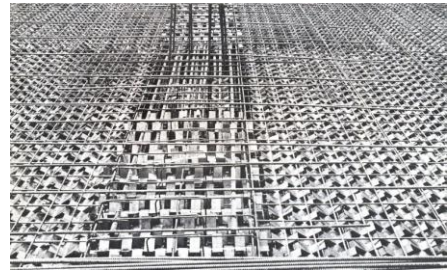


## X-BARS



EXAMPLES OF ARMOR

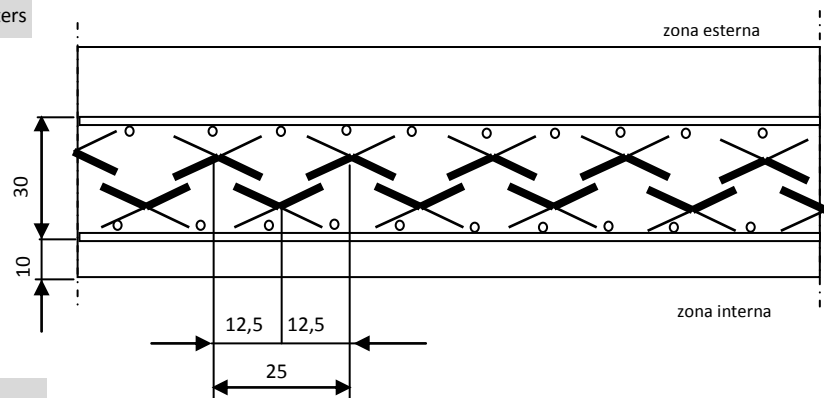
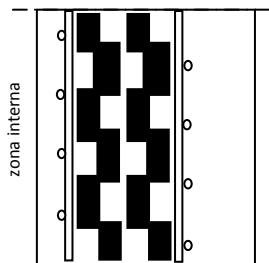
X-bars, MS or manganese steel armor, are special sections for the armor of the walls of the vaults. By varying the thickness of the wall or the level of security, they can be placed in single or double layer

### Characteristics

- high-strength, thanks to special steel alloys
- the special X profile is designed to provide more deviant surfaces to all breaking-through attempts
- barrier of maximum resistance to all forms of breaking-through attempts
- X-Bars, placed side by side, make a continuous barrier, while maintaining the compactness of the jet of concrete
- X-bars are provided with a length of 200cm, but they can be reduced during installation
- their shape allows an easy stacking with consequent small volume for stowage and transport

#### Solution with single layer

Minimum thickness of the wall cm 50 – n.8 X-bars for meters



#### Solution with double layer

Minimum thickness of the wall cm 35 – n.6,5 X-bars for metres

